

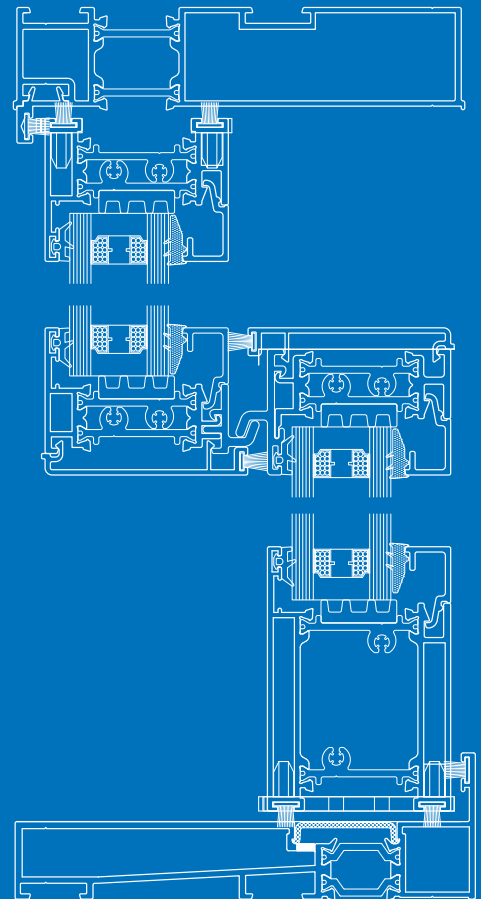


**smart**  
architectural aluminium

## VS600

The VS600 vertical sliding window is a brand new innovation to the Smart product range. VS600 incorporates the traditional styling of sash windows with the advantages of modern thermal aluminium profile.

- U Value 1.6W/m<sup>2</sup>K
- WER B
- Doc L Yes



The images illustrate the type of suitable application and are not binding in specification, colour or detail

# VS600

The VS600 vertical sliding window is a brand new innovation to the Smart product range. VS600 incorporates the traditional styling of sash windows with the advantages of modern thermal aluminium profile.

A traditional sash window may be used in heritage and conservation areas where Georgian and Victorian architecture is predominate. The ease of operation and excellent natural ventilation rates means that VS 600 is also suited to high occupancy buildings.

The window offers a flush opening with no projection into or out of the building, this style of window is frequently used on schools and hospitals.

VS600 hardware has been designed alongside the experts at Caldwell and utilises various standard

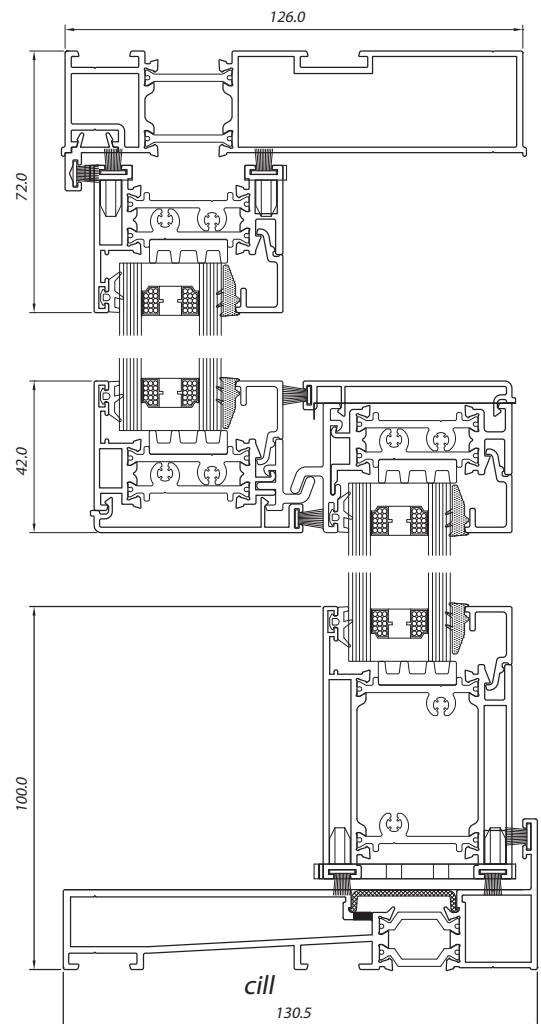
hardware designs. As well as the vertical sliding sash, VS600 features a 'tilt in' operation that facilitates the cleaning of the external glass.

The system features low line glazing gasket that will accept 28mm sealed units. The system can achieve overall U Values of  $1.6W/m^2K$  and a W.E.R. B rating. VS600 windows also feature concealed drainage and a concealed coupling option.

Assembly of VS600 is optimised through square cut outer frame and sash joints which require minimal machining aiding fabrication.

## Technical Performance

U Value	1.6W/m <sup>2</sup> K
WER	B
Doc L	Yes
Glass	28mm



**smart**  
architectural aluminium

Smart Systems Limited Arnolds Way, Yatton, North Somerset BS49 4QN. UK

Tel +44 (0)1934 876100 Fax +44 (0)1934 835169 sales@smartsystems.co.uk www.smartsystems.co.uk

Images and drawings are for illustrative purposes only and are not binding in specification, colour or detail.